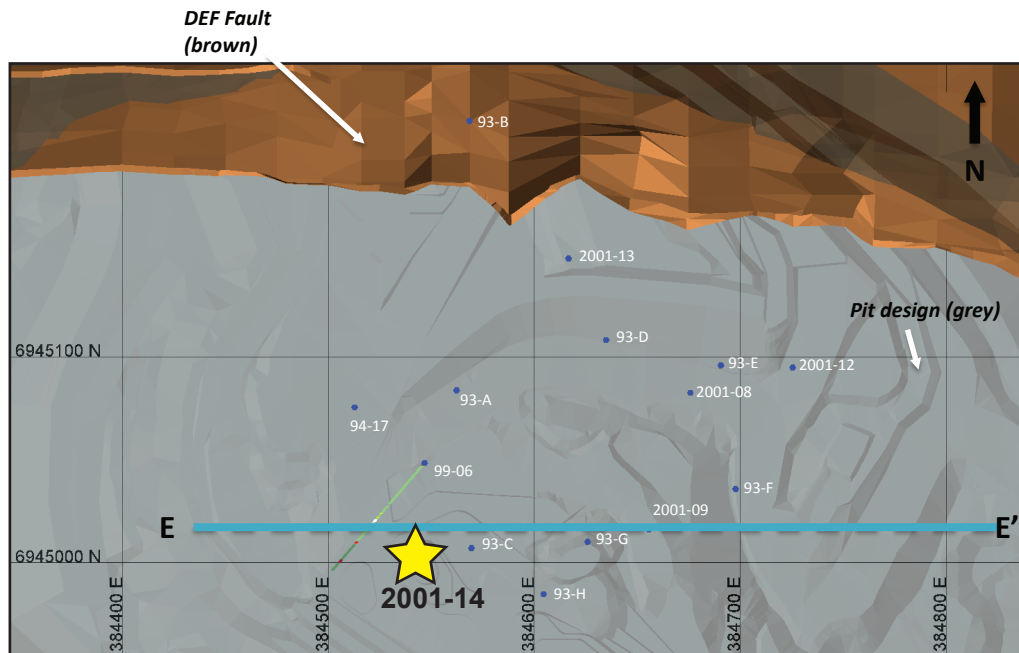


Minto deposit (Yukon MINFILE 115I 021, 022)

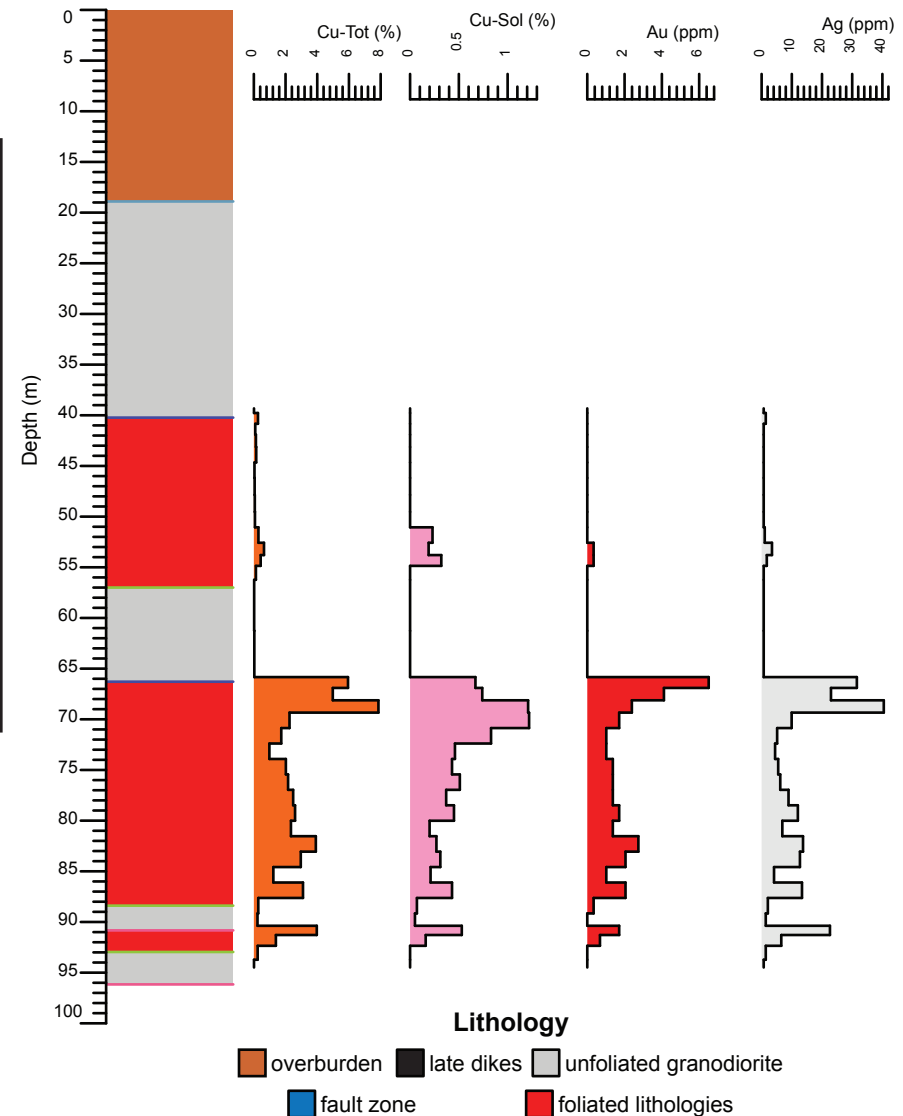
Drill Hole: 2001-14, Minto Main deposit

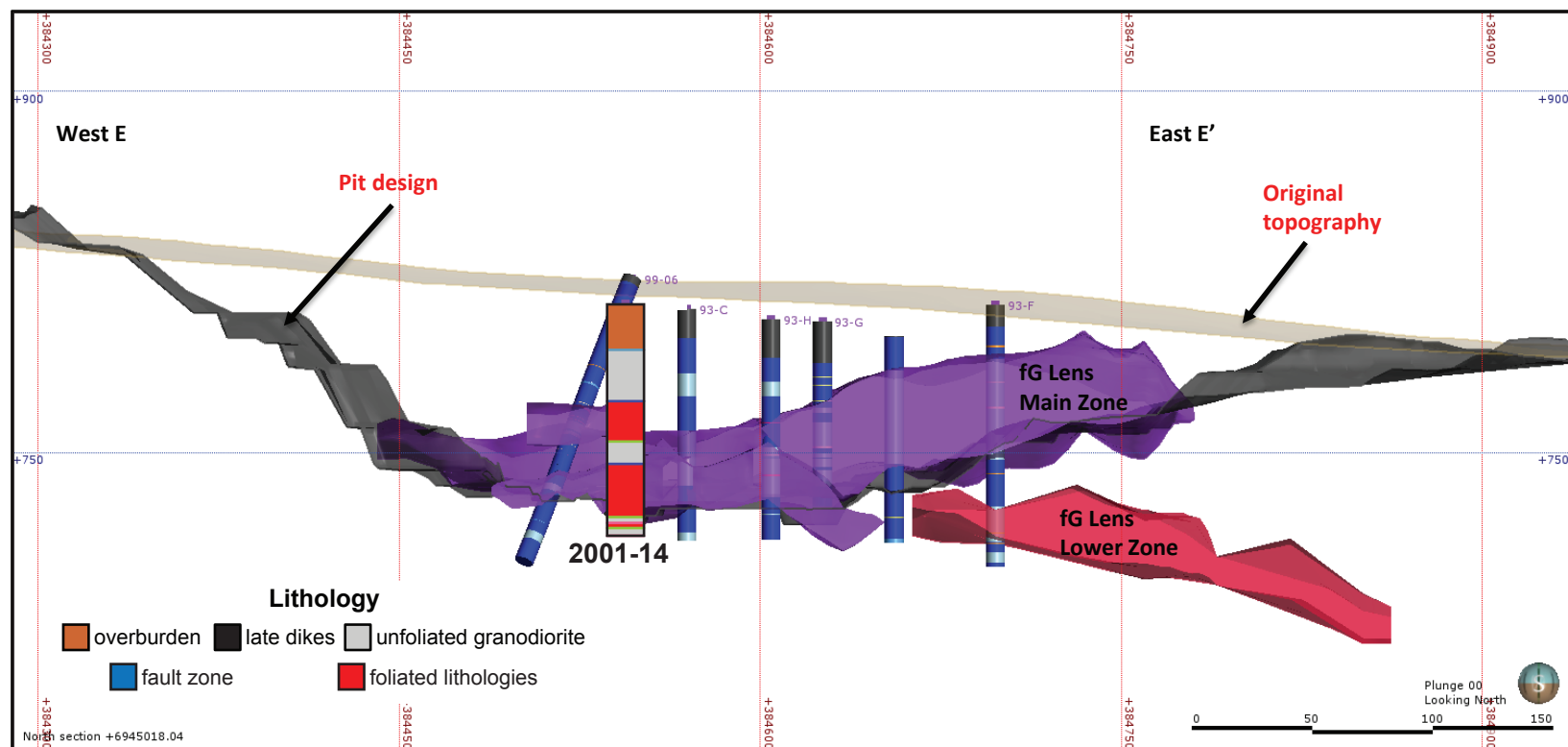
Area	Hole No.	Azimuth	Dip	Length (m)	Collar coordinates (NAD83, Zn 8)
Minto Main	2001-14	0	-90	96.16	384544mE, 6945003mN



Above: Orthophoto of Minto area. Collar location of 2001-14 shown by yellow star, blue circles show collar locations of other drill holes in YGS collection.

Right: Simplified strip log with selected assays.





Above: Simplified vertical east-west cross-section through the Minto Main pit.

Right: Selected assays through Minto Main zone. Cu - Tot = sulphide and non-sulphide copper, Cu-Sol = non-sulphide copper

Hole	From (m)	To (m)	Interval (m)	Sample	Cu (%)	Cu-Sol (%)	Au (ppm)	Ag (ppm)
2001-14	65.53	66.14	0.61	27147	0.0	0.0	0.0	0.7
2001-14	66.14	67.67	1.53	27148	5.9	0.7	6.5	31.5
2001-14	67.67	68.58	0.91	27149	5.0	0.7	4.1	23.0
2001-14	68.58	70.1	1.52	27150	7.9	1.2	2.4	40.5
2001-14	70.1	71.63	1.53	27153	2.3	1.2	1.7	9.9
2001-14	71.63	73.15	1.52	27154	1.7	0.8	1.0	5.1
2001-14	73.15	74.68	1.53	27155	1.0	0.5	1.0	4.5
2001-14	74.68	76.2	1.52	27156	2.0	0.4	1.4	5.5
2001-14	76.2	77.72	1.52	27157	2.2	0.5	1.4	6.2
2001-14	77.72	79.25	1.53	27158	2.5	0.4	1.4	8.9
2001-14	79.25	80.77	1.52	27159	2.6	0.5	1.7	12.0